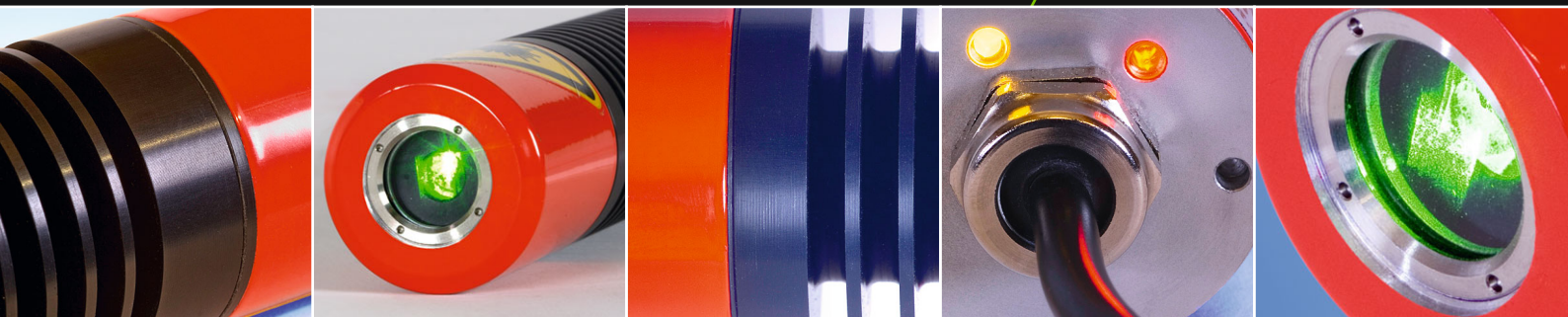


# PY LASER

 LINE LASER

Output power 10 to 20 mW

alignment with precision



## PY LASER.



### HIGHLIGHTS.

- green laser beam for best visibility
- SUPERLINE optic for excellent brightness
- integrated cooling
- standard diameter 40 mm
- wide range power supply 100-240 VAC
- manual focussing of line width
- protection by high temperature switch-off

### BRIGHT, EXCELLENT CONTRAST, SUPERIOR VISIBILITY.

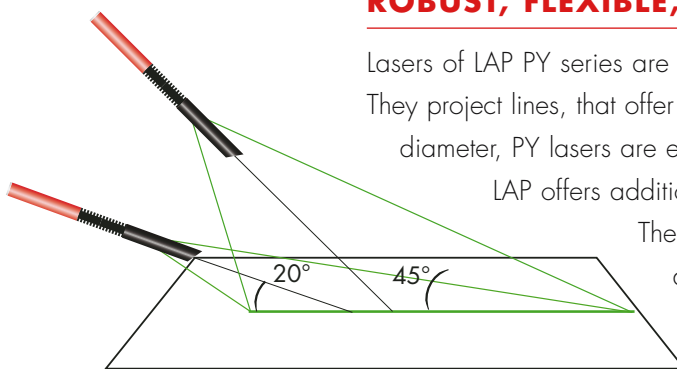
The visibility of green laser beams is around five times better compared to red lasers of same power. Because of this, the green line of LAP PY lasers stands out even from shiny, wet or textured surfaces. The LAP SUPERLINE optic provides the best brightness distribution possible for any line length. Line width may also be adjusted with the integrated focussing gear. The front cover with the protection screen is easy to remove for cleaning and can reasonably be replaced in case of damage.

### ROBUST, FLEXIBLE, RELIABLE.

Lasers of LAP PY series are designed for rough industrial environment. They project lines, that offer good visibility even at daylight. At 40 mm diameter, PY lasers are easy to attach with many common brackets.

LAP offers additional solutions for certain machines or tasks.

The green laser source is protected against heat damage by temperature surveillance. If the internal temperature gets too high, the laser is switched off.



# TECHNICAL DATA.

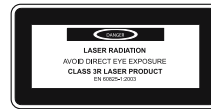
## MODELS.

Output Power	Linelas	Laser class	Line length <sup>1)</sup>
10 mW	LAP 10 PYL	2M	up to 10 m
15 mW	LAP 15 PYL	2M	up to 20 m
20 mW	LAP 20 PYL	3R	up to 30 m

1) depends on ambient light, height above surface, angle

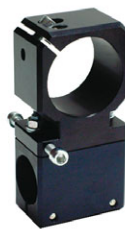
## GENERAL DATA.

Laser type, wavelength	DPSS, 532 nm, green
Line width (by ISO 11146)	0,5 - 3 mm
Enclosure rating	IP 54
Power supply	100 - 240 VAC
Power consumption	< 5 W
Ambient conditions	0° to +40°C, 35 - 90 % rel. humidity, non-condensing
Dimensions	Laser: length 396 mm x Ø 40 mm with cap: length 550 mm, cap Ø 45 mm
Shock, vibration	max. 5 g



## BRACKETS.

Besides the models shown here, LAP offers movable brackets, brackets customized for certain machines and individual solutions.



B2-PD



B2-PD-J

LAP has a great deal of experience with customer-specific solutions. Please inquire!



Sensors, Line Lasers, Projectors  
Systems & Solutions




---

**LAP Laser LLC.**

Sales, Service

7669 Wooster Pike  
Cincinnati, OH 45227  
USA

Phone +1 (513) 271-4529  
Fax +1 (513) 271-3821  
Email [info-us@lap-laser.com](mailto:info-us@lap-laser.com)

---

**LAP GmbH  
Laser Applikationen**

Headquarter: Production, Sales, Service

Zeppelinstr. 23  
21337 Lueneburg  
Germany

Phone +49 (0)4131 9511-95  
Fax +49 (0)4131 9511-96  
Email [info@lap-laser.com](mailto:info@lap-laser.com)

---

**LAP Laser Applications  
Asia Pacific Pte Ltd**

Sales, Service

Block 750A, #07-02 Suite 8  
Technopark at Chai Chee  
Singapore 469001  
Singapore

Phone +65 6536 9990  
Fax +65 6533 6697  
Email [info-asia@lap-laser.com](mailto:info-asia@lap-laser.com)

---

**LAP GmbH  
Laser Applikationen  
Moscow Representative Office**

Sales

1. Kasatschi Pereulok No. 7  
119017 Moscow  
Russian Federation

Phone +7 495 7304043  
Fax +7 495 7304044  
Email [info-russia@lap-laser.com](mailto:info-russia@lap-laser.com)

---

**LAP Laser Applications  
Asia Pacific Pte Ltd  
Shanghai Representative Office**

Sales, Service

31/F Haitong Securities Tower  
689 Guang Dong Road  
Shanghai 200001  
China

Phone +86 (21) 5047-8881  
Fax +86 (21) 5047-8887  
Email [info-asia@lap-laser.com](mailto:info-asia@lap-laser.com)

---

**Partners**

[www.LAP-LASER.com](http://www.LAP-LASER.com)



**L A S E R**

Sensors, Line Lasers, Projectors  
Systems & Solutions